



# LiftMaster®

MAKING LIFE EASIER

Next generation smart openers for your home.



works with  
**nest**

Get connected



**8**  
Years  
Motor warranty

**200mm/sec**  
Speed

**myQ™**  
SMARTPHONE  
COMPATIBLE

**Silent**

**0,8W**  
Standby Power

**LED**





# Worldwide No. 1

As a leading provider of convenience and security products for homes & businesses worldwide, LiftMaster's strong foundation emanates from the millions of products manufactured and sold since the early 1960s. Around the world, there are more LiftMaster openers installed than any other brand.



# Our next generation remote control...

Choose the MyQ® option that has its own app and you can open or close your garage door from anywhere via your smartphone... how easy is that! Link the app to an optional Nest Camera and you can monitor your garage from your phone too... how useful is that...

...Perfect for those times when you can't be at home for that important delivery! Utilising an optional Nest camera and the MyQ® App, you will be able to watch when the delivery person arrives, open the garage door for them, even tell them where to leave the parcel and close the door after they've gone ...simply amazing!



# Design meets technology

The state-of-the-art design of the new Evolution line is the winner of a consumer design study. Ten design concepts were presented to over 1,000 consumers in five different countries in Europe.

The state-of-the-art technology of the new Evolution line is the combination of a new logic and energy efficiency. Evolution garage door openers are equipped with the best radio performance ever.

In short: The best radio performance ever and more importantly: myQ® technology.

Sustainability, innovation and design are supported by an increased travel speed, a fine set of accessories and warranty periods up to 8 years on the drive motor. This combination is second to none and will provide the user with the great experience one can expect from a world market leader.



## myQ® works with Nest by Google

LiftMaster's myQ® technology is the first garage door control system to be integrated with the Nest platform. The optional myQ® system allows you to set your Nest Learning Thermostat or Nest Cam using the myQ® app. You can also move seamlessly between apps allowing you to open or close your garage door from anywhere you can access the internet.

...and watch it all happen if you set up a Nest Cam in your garage.



## Permanent lighting

Long lasting LEDs (up to 50,000 hours of service), no warm up phase, so the light is bright immediately. Significantly lower CO<sub>2</sub> emissions and no heavy metal or mercury in the production process.



## Warranty

We have also increased the warranty period to a maximum of 8 years (LM100EVF) to demonstrate that LiftMaster provides premium quality products.



## Sustainability

The low standby power consumption corresponds to savings of up to £230 over the life of the opener compared to the majority of garage door openers that are installed around the world.



## Pulling power!

The EVF range includes some of the most powerful openers on the market handling door weights up to a massive 130 Kg and 5.5m wide.



## Speed

We have accelerated the speed of our operators to a maximum travel speed of 200 mm/sec for the LM80 and LM100 without having to pay a premium for this important distinguishing feature.



## Evolution Radio

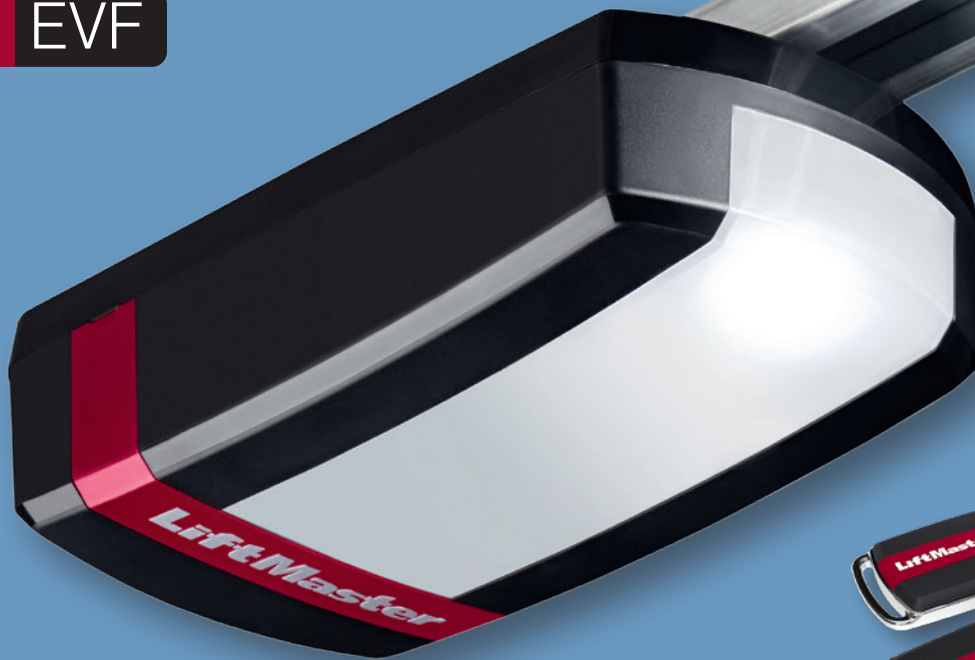
Evolution garage door openers are equipped with the best radio performance ever with bi-directional radio – which means your garage door opener does not only receive signals, but also sends signals back.



## Whisper Quiet

The quiet and smooth operation provided by the belt drive system is second to none – try it out!

# LM100 EVF



## LM100 EVF - Key details

### Door Operation

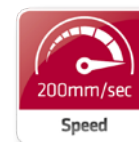
<b>Transmitters</b>	Two 4-Button Mini Transmitters, 868 MHz, LED battery indicator.
<b>Wall Station</b>	Two button wireless control station to operate up to two doors.
<b>Radio</b>	Built-in Tri-Band 868 MHz and 433 MHz receiver.
<b>myQ® Technology (Optional)</b>	Patented two-way communication system enables you to monitor and control your door from anywhere in the world via the optional myQ internet gateway.
<b>Security</b>	Opener acts as a positive lock on your door.

### Convenience Features

<b>Courtesy Light</b>	LED lighting rated to over 20 years of normal service. Automatically turns off 2.5 minutes after door closing.
<b>Door Travel</b>	Soft-start and soft-close, 200mm per second.
<b>Internal Disconnect</b>	Convenient pull cord to disconnect the door drive allowing manual operation of the door in case of power cut. Optional external disconnect available.

### Technical Details

<b>Maximum Pull Force</b>	1,000 Newton.
<b>Max. Door Dimensions</b>	130 Kg, 2.25m (7'5") high as standard, up to 4m (13') with optional rail.
<b>Drive Type</b>	Maintenance-Free, 24 Volt DC, permanent lubrication motor gear.
<b>Safety Reverse System</b>	Optical detection of speed and door position. Automatically reverses upon meeting an obstruction.
<b>Rail Type</b>	Maintenance-Free, one piece steel rail with steel reinforced drive belt.
<b>Optional Equipment</b>	Please see pages 11-15 of this brochure.
<b>Warranty</b>	Eight year drive motor warranty. Please see warranty sheet for full details.





# LM80 EVF



## LM80 EVF - Key details

### Door Operation

<b>Transmitters</b>	Two 4-Button Mini Transmitters, 868 MHz, LED battery indicator.
<b>Wall Station</b>	Two button wireless control station to operate up to two doors.
<b>Radio</b>	Built-in 7-Band 868 MHz and 433 MHz receiver.
<b>myQ® Technology (Optional)</b>	Patented two-way communication system enables you to monitor and control your door from anywhere in the world via the optional myQ® internet gateway.
<b>Security</b>	Opener acts as a positive lock on your door.

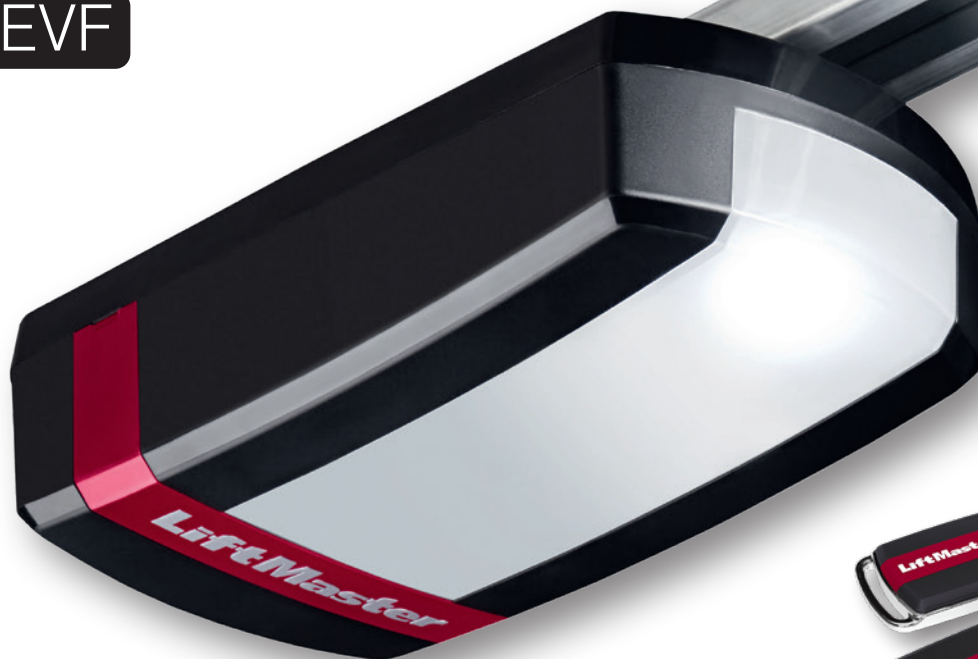
### Convenience Features

<b>Courtesy Light</b>	LED lighting rated to over 20 years of normal service. Automatically turns off 2.5 minutes after door closing.
<b>Door Travel</b>	Soft-start and soft-close, up to 200mm per second.
<b>Internal Disconnect</b>	Convenient pull cord to disconnect the door drive allowing manual operation of the door in case of power cut. Optional external disconnect available.

### Technical Details

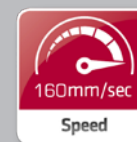
<b>Maximum Pull Force</b>	800 Newton.
<b>Max. Door Dimensions</b>	130 Kg, 2.25m (7'5") high as standard, up to 3m (10') with optional rail.
<b>Drive Type</b>	Maintenance-Free, 24 Volt DC, permanent lubrication motor gear.
<b>Safety Reverse System</b>	Optical detection of speed and door position. Automatically reverses upon meeting an obstruction.
<b>Rail Type</b>	Maintenance-Free, one piece steel rail with steel reinforced drive belt.
<b>Optional Equipment</b>	Please see pages 11-15 of this brochure.
<b>Warranty</b>	Six year drive motor warranty. Please see warranty sheet for full details.

# LM60 EVF



## LM60 EVF - Key details

Door Operation	
<b>Transmitters</b>	Two 4-Button Mini Transmitters, 868 MHz, LED battery indicator.
<b>Wall Station</b>	Two button wireless control station to operate up to two doors.
<b>Radio</b>	Built-in 7-Band 868 MHz and 433 MHz receiver.
<b>myQ® Technology (Optional)</b>	Patented two-way communication system enables you to monitor and control your door from anywhere in the world via the optional myQ internet gateway.
<b>Security</b>	Opener acts as a positive lock on your door.
Convenience Features	
<b>Courtesy Light</b>	LED lighting rated to over 20 years of normal service. Automatically turns off 2.5 minutes after door closing.
<b>Door Travel</b>	Soft-start and soft-close, 160mm per second.
<b>Internal Disconnect</b>	Convenient pull cord to disconnect the door drive allowing manual operation of the door in case of power cut. Optional external disconnect available.
Technical Details	
<b>Maximum Pull Force</b>	650 Newton.
<b>Max. Door Dimensions</b>	110Kg, 2.25m (7'5") high as standard, up to 2.44m (8') with optional rail.
<b>Drive Type</b>	Maintenance-Free, 24 Volt DC, permanent lubrication motor gear.
<b>Safety Reverse System</b>	Optical detection of speed and door position. Automatically reverses upon meeting an obstruction.
<b>Rail Type</b>	Maintenance-Free, one piece steel rail with steel reinforced drive belt.
<b>Optional Equipment</b>	Please see pages 11-15 of this brochure.
<b>Warranty</b>	Five year drive motor drive motor warranty. Please see warranty sheet for full details.





# LM750 EVGB

Now with myQ!



## LM750 EVGB - Key details

### Door Operation

Transmitters	Two 4-Button Mini Transmitters, 868 MHz, LED battery indicator.
Wall Station	Two button wireless control station to operate up to two doors.
Security	Opener acts as a positive lock on door.

### Convenience Features

Courtesy Light	LED lighting rated to over 20 years of normal service. Automatically turns off 3 minutes after door closing.
Door Travel	Soft-start and soft-close, automatic close (requires optional infra-red safety reverse system).
Internal Disconnect	Convenient pull cord to disconnect the door drive allowing manual operation of the door in case of power cut. Optional external disconnect available.

### Technical Details

Maximum Pull Force	550 Newton
Maximum Door Weight	120 Kg
Maximum Door Size	18m <sup>2</sup> /4.5m high
Drive Type	Direct drive maintenance-free, 24 Volt DC, permanent lubrication motor gear
Safety Reverse System	Optical detection of speed and door position. Automatically reverses upon meeting an obstruction.
Maximum Travel Rate	180mm per second
Warranty	Five year drive motor warranty against manufacturing defects. Please see warranty sheet for full details.



# LiftMaster product range feature matrix.



MODEL:	LM100EVF	LM80EVF	LM60EVF	LM750EVGB
Type	Drawbar	Drawbar	Drawbar	Roller Door
Compatible doors:	Sectional/ Up & Over	Sectional/ Up & Over	Sectional/ Up & Over	1-Skin Roller
CE Certification: General	German TUV tested to meet EN12453 and all other EU/UK requirements			
Pulling force	1000N	800N	650N	550N
Motor	24v DC	24v DC	24v DC	24v DC
Opening speed second	200mm/ second	200mm/ second	160mm/ second	80mm/ second
Noise level	54 dB	54 dB	54 dB	59 dB
Standby power	0.8W	0.8W	0.8W	0.8W
Lighting	LED	LED	LED	LED
Force sensing	Yes	Yes	Yes	Yes
Soft-start/soft-stop	Yes	Yes	Yes	Yes
Limit Setting	Auto/Manual	Auto/Manual	Auto/Manual	Auto/Manual
Drive	Belt	Belt	Belt	Direct Drive
Rail	1 or 3-Piece	1 or 3-Piece	1 or 3-Piece	N/A
Radio System myQ <sup>®</sup>	Enabled, only works with myQ <sup>®</sup> (Optional) see page 11			
Receiver type	Dual Frequency 6-Band	Dual Frequency 7-Band	Dual Frequency 7-Band	Dual Frequency 7-Band
Radio Frequency	868/433 MHz	868/433 MHz	868/433 MHz	868/433MHz
Memory Registers	180	180	180	180
Code type	Bi-directional scanning	Bi-directional scanning	Bi-directional scanning	Bi-directional scanning
Remote controls	2 x 4 Channel Mini	2 x 4 Channel Mini	2 x 4 Channel Mini	2 x 4 Channel Mini
Wall control	Wireless: 2 Channel	Wireless: 2 Channel	Wireless: 2 Channel	Wireless: 2 Channel
Rated door area	13.5m <sup>2</sup>	13.5m <sup>2</sup>	10.7m <sup>2</sup>	18.0m <sup>2</sup>
Rated door weight	130Kg	130Kg	110Kg	120Kg
Minimum headroom	35mm	35mm	35mm	355mm
Maximum door height	4000mm	3000mm	2500mm	4500mm
Overall opener length* for doors up to 7'6" (2286mm)	10'6" (3200mm)	10'6" (3200mm)	10'6" (3200mm)	N/A

This is the standard "Out of the box" dimension. We can supply openers for doors up to 4000mm high and all rails can be cut down.



# Optional convenience accessories



Compatible with:  
LM60 EVF,  
LM80 EVF,  
LM100 EVF,  
& LM750EVGB

## myQ® kit

Internet Gateway 828EV plus 770E Protector System™

Revolutionary new accessory with built-in myQ® technology that connects to the internet and allows monitoring and operating the garage door opener in or around your home or from anywhere in the world by using a smartphone or a computer. It utilises a two-way communication system. Easy and fast installation through in-home router. No annual activation fee.

Please see page 11 to learn how myQ® works.



## Wireless Keypad 747EV

Open or close your garage door without using a remote control or key. The LiftMaster Wireless Keyless Entry System can open the door using a private 4-digit code. Allows temporary access codes for visitors. Completely wireless, powered by one 9-volt battery (included). Weatherproof flip-up protective cover. Backlit keypad makes numbers easy to see, even in the dark.



## Wireless Wall Control 128EV

2 channels, elegant design, easy to install, operates on 433 MHz.

# Infra-red safety reversing system

In order to be compliant with current EU regulations, IR sensors must be installed in order to use myQ® enabled accessories. The Internet Gateway 828EV requires IR sensors as supplied in the myQ® kit.

## The Protector System™ fail-safe infra-red sensor system 770E

- For use with all LiftMaster garage door openers.
- Red light LED indicates IR beam continuity.
- This is a non contact reversing system. When the IR beam is broken the door will stop and reverse.



# Transmitters

Transmitters are one of the design highlights in the new Evolution program. LED light indicates battery life.

## Premium 4-channel transmitter 868 MHz rolling code TX4EVF

- Compatible with all openers in this brochure.
- Only for use with Evolution models.



## Premium 4-channel transmitter 868 MHz rolling code TX4EVS

- Compatible with LM750 EVGB and all EVF openers in this brochure.
- Only for use with Evolution models.



## Premium Universal 4-channel transmitter 433 MHz rolling code TX4UNIS

For use when you want to convert any opener in this brochure to 433MHz rolling code. These four models can be easily converted to 433 MHz as a second receiver is built into every head unit, there's no need to buy a separate receiver board. The white LED identifies these transmitters as operating on 433 MHz.

This transmitter is also compatible with any LiftMaster opener made since 1997. It can replace all 433 MHz transmitters: TX4UNI, 94330E, 94333E, 94334E, 94335E as well as 4330E, 4333E and 4335E.





# How to set-up myQ®



Please scan code to see our myQ set-up video



## 1. Connect

Connect the provided Ethernet cable to router. Use the plug valid for your country (not all models). Connect power to the internet gateway. When the internet gateway connects to the internet the green light will stop blinking and will light solid.

## 2. Create an account

Visit [www.myliftmaster.eu](http://www.myliftmaster.eu) to create an account. If you already have an account, use your login and password.

## 3. Register gateway

Enter the Serial Number from the GATEWAY (see label on the bottom of the Internet Gateway).

## 4. Add myQ® Devices

Use an Internet enabled computer or smart phone to add devices. After you add a device, the blue light on the internet gateway will appear and stay on.

Apps can be downloaded free of charge.

# MyQ® – How it works



Mobile phone (or computer)

LiftMaster Internet Gateway™

Your Garage Door Opener

Open or close the Garage

myQ® works with Nest by Google – LiftMaster's myQ® technology is the first garage door control system to be integrated with the Nest platform. The optional myQ® system allows you to set your Nest Learning Thermostat or Nest Cam using the myQ® app. You can also move seamlessly between apps allowing you to open or close your garage door from anywhere you can access the internet... and watch it all happen if you set up a Nest Cam in your garage.

